

# Basie-Straight Ahead

composed & arranged  
by Sammy Nestico

## DRUMS

**BRIGHT SWING** ♩ = 200 (PNO. SOLO)

STICKS

*mf*

(4)

(6)

(8)

(10)

(12)

**A** (Sxs.) (4)

(6) (BR)

**B** (Sxs.) (4)

(4)

**C** (ENS.) **SOLO FILL** - - - - -

**D** (Sxs.) (4)

(6)

**E** (ENS.) **FILL** - 7 **FILL** - 7 **FILL** - - 7

The drum score is written on ten staves. The first staff is for the snare drum, with a tempo of 200 and a dynamic of mezzo-forte (mf). It features a 'BRIGHT SWING' feel and a 'PNO. SOLO' section. The score is divided into sections A through E. Section A is for saxophones (Sxs.) and consists of 4 measures. Section B is also for saxophones and consists of 4 measures. Section C is for the ensemble (ENS.) and includes a 'SOLO FILL' indicated by a thick horizontal line. Section D is for saxophones and consists of 4 measures. Section E is for the ensemble and includes 'FILL' markings with a 7-measure rest. The score includes various rhythmic notations such as eighth notes, quarter notes, and rests, along with dynamic markings and performance instructions.

DRUMS - PG. 2

BASIC - STRAIGHT AHEAD

(TEN. SOLO)

Musical notation for Tenor Solo, consisting of two staves. The top staff contains a melodic line with eighth and sixteenth notes. The bottom staff contains a rhythmic accompaniment with eighth notes and rests.

(F)

Musical notation for F major section, consisting of four staves. The top staff has a circled 'F' and a measure with a slash. The following three staves are rhythmic patterns with measure numbers (4), (6), (8), (10), and (12) indicated.

sub mp GRAD. CRESC.

(F) (Br.)

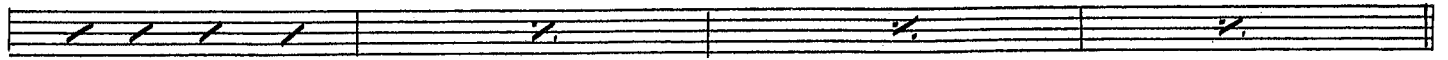
(Sxs)

Musical notation for Sub-mp Grad. Cresc. section, consisting of four staves. The top staff has a circled 'F' and 'Br.', and includes a 'FILL' section with a dashed line. The bottom three staves show rhythmic patterns with accents and measure numbers (4), (6), (8), (10), and (12).

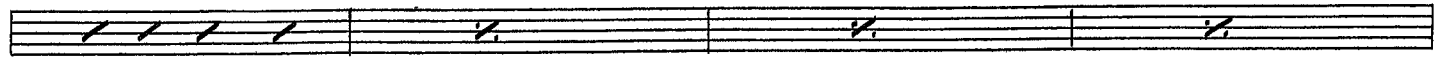
(H)

(PND. SOLO)

Musical notation for Pnd. Solo section, consisting of four staves. The top staff has a circled 'H' and a measure with a slash. The following three staves are rhythmic patterns with measure numbers (4), (6), (8), (10), and (12) indicated.



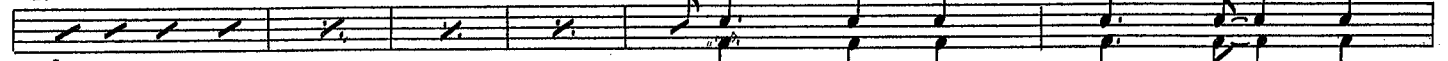
1 (ENS.)



mf



2



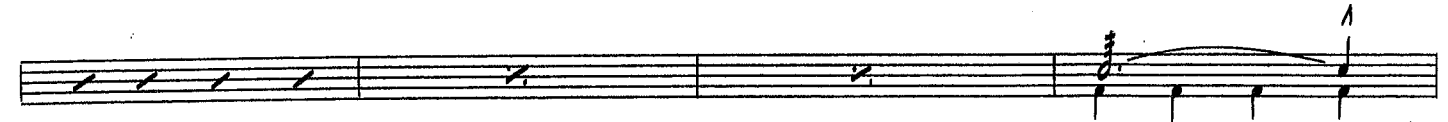
f



(PNO.)



3 (ENS.)

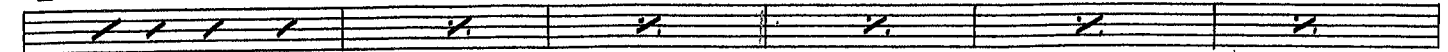


(ENS.)



f

4



(4)

(6)

(ENS.)



2



As Recorded by Gordon Goodwin's Big Phat Band  
**EAST COAST ENVY**

**DRUMS**

JAZZY HALF-TIME GROOVE ♩ = 212

By GORDON GOODWIN

1ST TIME JUST H.H.  
2ND TIME ADD B.D. + S.D.

Musical notation for measures 1 through 16. Measures 1-12 feature a complex drum pattern with eighth notes and rests. Measure 13 is marked '13 SIM.' and contains a simple pattern of eighth notes. Measure 16 ends with a double bar line and a sharp sign.

Musical notation for measures 17 through 48. Measures 17-48 consist of a continuous, simple drum pattern of eighth notes, indicated by a circled measure number '17' at the start.

Musical notation for measures 49 through 60. Measure 49 is marked '49 SWING FEEL (H.H.)' and includes a 'FILL' section. Measures 49-60 feature a swing feel with a pattern of eighth notes and rests.

Musical notation for measures 61 through 64. Measures 61-64 are labeled 'HALF-TIME GROOVE' and feature a simple pattern of eighth notes.

DRUMS

EAST COAST ENVY

- 2 -

65 66 67 68

69 70 71 72

HALF-TIME GROOVE

73 74 75 76

77 78 79 80

81

81 82 83 84 85 86

87 88 89 90

FILL

91

SOLOS  
HALF-TIME GROOVE

91 92 93 94 95 96 97 98

99 100 101 102 103 104 105 106

107 108 109 110 111 112 113 114

115 116 117 118 119 120 121 122

123

SWING FEEL

123 124 125 126

127 128 129 130 131

DRUMS

EAST COAST ENVY

- 3 -

Measures 132-136: A series of five measures of drum notation. Measures 132-135 consist of a steady eighth-note pattern. Measure 136 has a different pattern. Above the staff, there are musical notes with stems and flags, and a '- 3 -' above the first measure.

Measures 137-142: A series of six measures of drum notation. Measures 137-141 continue the eighth-note pattern. Measure 142 has a different pattern. Above the staff, there are musical notes with stems and flags.

143 HALF-TIME GROOVE

Measures 144-149: A series of six measures of drum notation. Measures 144-148 consist of a steady eighth-note pattern. Measure 149 has a different pattern. Above the staff, there are musical notes with stems and flags.

Measures 150-156: A series of seven measures of drum notation. Measures 150-153 consist of a steady eighth-note pattern. Measures 154-156 have a different pattern. Above the staff, there are musical notes with stems and flags.

1. REPEAT FOR SOLOS AS NEEDED 2. PLAY LAST TIME

Measures 157-160: A series of four measures of drum notation. Measures 157-158 have a steady eighth-note pattern. Measures 159-160 have a different pattern. Above the staff, there are musical notes with stems and flags. A 'FILL' is indicated at the end of measure 160.

Measures 161-165: A series of five measures of drum notation. Measures 161-164 have a steady eighth-note pattern. Measure 165 has a different pattern. Above the staff, there are musical notes with stems and flags.

Measures 166-170: A series of five measures of drum notation. Measures 166-169 have a steady eighth-note pattern. Measure 170 has a different pattern. Above the staff, there are musical notes with stems and flags.

Measures 171-175: A series of five measures of drum notation. Measures 171-174 have a steady eighth-note pattern. Measure 175 has a different pattern. Above the staff, there are musical notes with stems and flags.

Measures 176-179: A series of four measures of drum notation. Measures 176-178 have a steady eighth-note pattern. Measure 179 has a different pattern. Above the staff, there are musical notes with stems and flags. A 'FILL' is indicated at the end of measure 179.

177 HALF-TIME GROOVE

Measures 178-181: A series of four measures of drum notation. Measures 178-180 have a steady eighth-note pattern. Measure 181 has a different pattern. Above the staff, there are musical notes with stems and flags. A 'SIM.' (simile) is written above measure 179.

Measures 182-187: A series of six measures of drum notation, all consisting of a steady eighth-note pattern.

Measures 188-192: A series of five measures of drum notation. Measures 188-191 consist of a steady eighth-note pattern. Measure 192 has a different pattern. Above the staff, there are musical notes with stems and flags.

DRUMS

**193** SWING FEEL

194 195 196 197 198

199 200 201 202 203 204

HALF-TIME GROOVE

205 206 207 208 209 210 211

212 213 214 215 216

HALF-TIME GROOVE

217 218 219 220 221 222 223 224

**225**

225 226 227 228

229 230 231 232 233 234 235 236

237 238 239 240

241 242 243 244

245 246 247 248

249 250 251 252

253 254 255 256